



**USC Viterbi**

School of Engineering  
*K-12 STEM Center*



*(L:R) Prof. Slaughter, Dean Yortsos, Prof. Ragusa greet two K-12 teachers.*

# 40+ years of K-12 STEM Outreach Evidence-Based Outreach Research Original Interventions

**New Faculty Orientation – August 2019**

**USC Viterbi**  
School of Engineering

University of Southern California



**USC Viterbi**

School of Engineering  
*K-12 STEM Center*



*(L:R) Prof. Slaughter, Dean Yortsos, Prof. Ragusa greet two K-12 teachers.*

**Mission: To inspire, inform, and impact** underrepresented, underserved, and disadvantaged K-12 students to **develop STEM identity and to increase lifelong participation in STEM** by providing community-oriented and research-based educational opportunities.

# K-12 STEM Center merges

- STEM Educational Outreach Programs
- Viterbi Adopt-a-School, Adopt-a-Teacher



**12,000  
students  
per year**

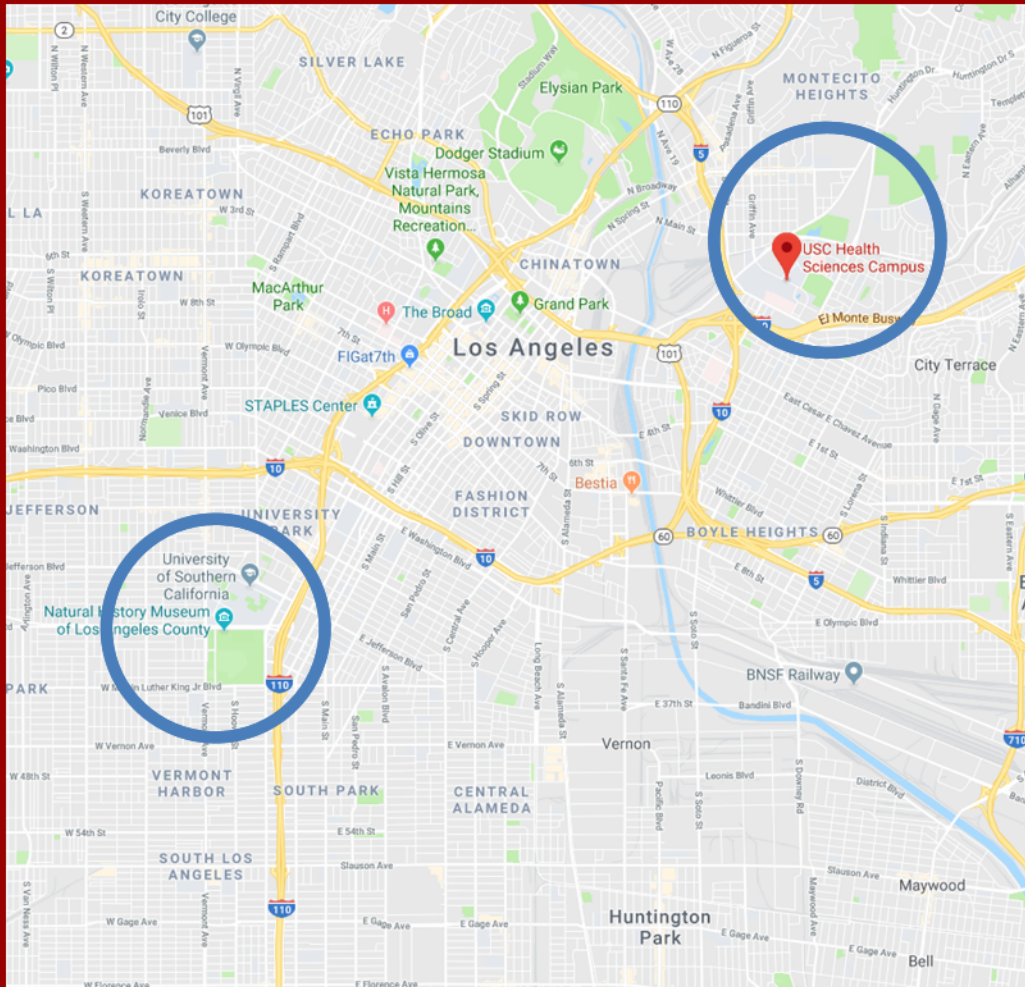
**Maja Matarić:**  
**K-12 STEM Center Lead**

**Co-Directors:**  
**Darin Gray, Ed.D.**  
**Katie Mills, Ph.D.**

**Staff:**  
**Mary Bonapart-Saller, Ph.D.**  
**Ben Louie, MESA Director**



# USC Viterbi K-12 STEM Center

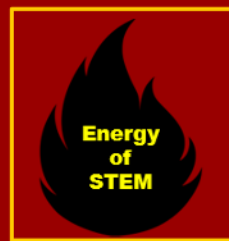


## Local Schools:

- Low income
- Low resources
- 60-98% under-represented minorities
- USC Family of Schools & NAI
- >500 schools, >20 districts



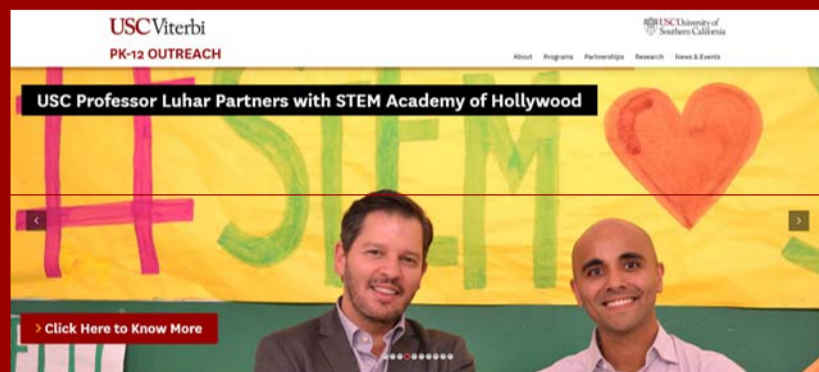
# Programs, Projects & Partnerships



<https://viterbi12.usc.edu/broader-impacts/>



# Programs, Projects & Partnerships



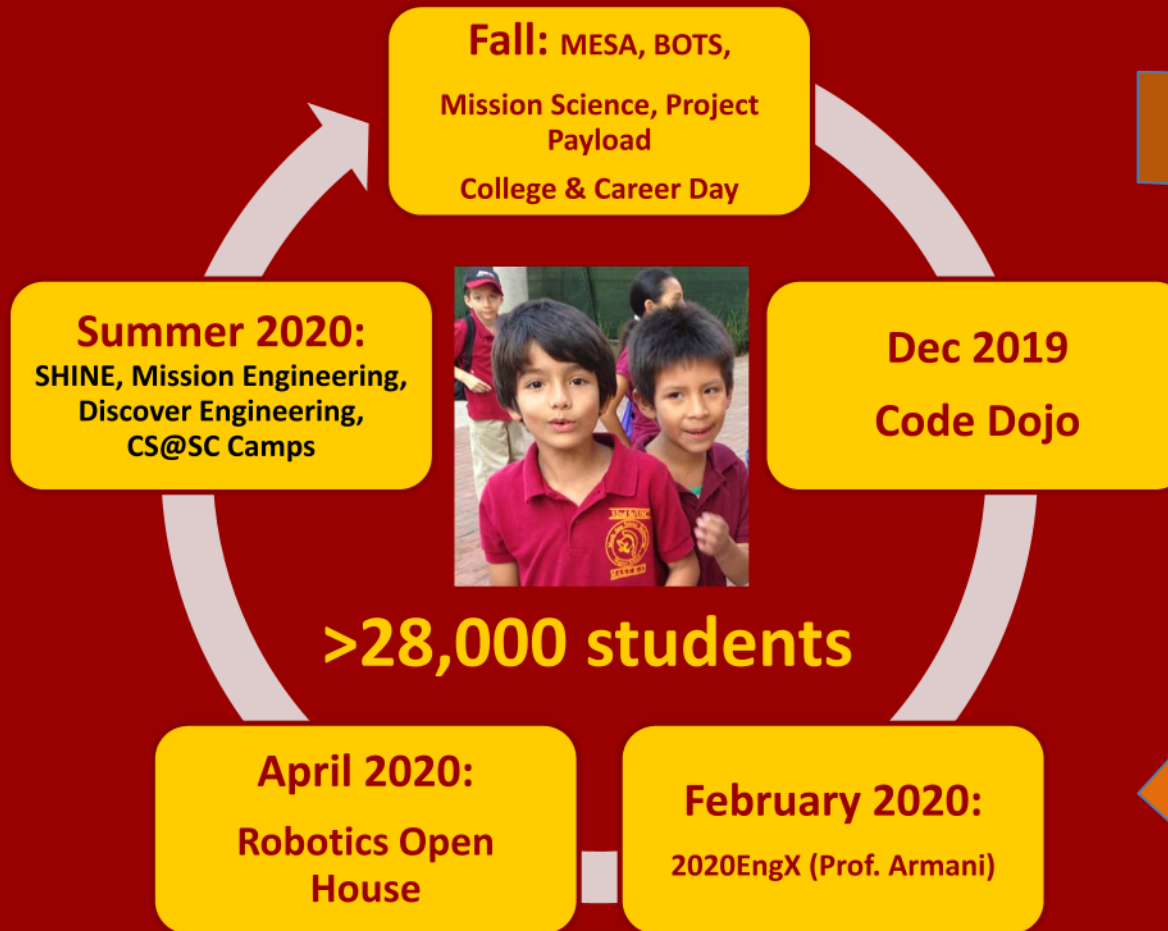


# Get involved throughout the year



Pipeline of events to engage schools, teachers & students:

Faculty can contribute Broader Impacts through events & programs



*Tentative partners and timeline for 2019-20 Spotlights*

# Broader Impacts Pathway



**2019-2020**

**Tap into  
STEM Center Event  
Speak/Judge  
Join SHINE or other  
programs**

**2020-2021**

**Identify possible  
partner school for  
lab tour or  
speak/judge**

**2021-2022**

**Develop relationship  
with the partner  
school**

During the year you submit CAREER proposal:

Fall: brainstorm, STEM Center helps identify partner possibilities, meet Principal

Spring: interaction with Partner (lab tour, meet faculty, etc.)

May: ask for a letter of collaboration from STEM Center & Partner Principal



**Darin Gray, Ed.D**  
**daring@usc.edu**  
**<http://viterbiK12.usc.edu>**

**Katie Mills, Ph.D.**  
**[kmills@usc.edu](mailto:kmills@usc.edu)**



@USCViterbiSTEM

Facebook:  
ViterbiOutreach

