



New Faculty Orientation

Welcome and Overview

Timothy M. Pinkston
Vice Dean for Faculty Affairs

213-740-2671

tpink@usc.edu

August 18, 2022

New and Recent Faculty Hires



Assistant Professors

- Neda Maghsoodi, AME***
- Thomas Petersen, CEE**
- Souti Chattopadhyay, CS**
- Lars Lindemann, CS***
- Harsha Madhyastha, CS***
- Oded Stein, CS***
- Swabha Swayamdipta, CS**
- Weihang Wang, CS**
- Dani Yogatama, CS**
- Yasser Khan, ECE-EP*
- Mengjie Yu, ECE-EP*
- Quntao Zhuang, ECE-EP**
- Chris Lin Torng, ECE-S***
- Zhenglu Li, MFD***
- Yu-Tsun Shao, MFD***

(Visiting) Associate Professors

- Harsha Madhyastha, CS***
- Feng Qian, ECE-S***
- Giacomo Nannicini, ISE**

Professor

- Demetrios Christodoulides, ECE-S**
- Jay Hyung Lee, MFD***

Lecturers

- Emma Singer, AME**
- Saakar Byahut, AME**
- Niloufar Izadinia, ISE***

Senior Lecturer

- Roxana Javid, CEE**
- Marco Popa, CS**
- Susan Schober, ECE-EP**
- Reza Jafarkhani, ITP**
- Maryam Majedi, ITP**

Research Assistant Professors

- Sifat Muin, CEE*
- Bo-Tong Zheng, CEE*
- Luis Garcia, CS (ISI)**
- Filip Ilievski, CS (ISI)**
- Yajie Zhao, CS (ICT)**
- Zaijun Chen, ECE-EP**
- Abigail Horn, ISE (ISI)**

* *Joined in Spring 2022*
** *Joined in Fall (or Summer) 2022*
*** *Joins in Spring 2023*

New and Recent T/TT Faculty Hires



Assistant Professors

- Neda Maghsoodi, AME***
- Thomas Petersen, CEE**
- Souti Chattopadhyay, CS**
- Lars Lindemann, CS***
- Harsha Madhyastha, CS***
- Oded Stein, CS***
- Swabha Swayamdipta, CS**
- Weihang Wang, CS**
- Dani Yogatama, CS**
- Yasser Khan, ECE-EP*
- Mengjie Yu, ECE-EP*
- Quntao Zhuang, ECE-EP**
- Chris Lin Torng, ECE-S***
- Zhenglu Li, MFD***
- Yu-Tsun Shao, MFD***



(Visiting) Associate Professors

- Harsha Madhyastha, CS***
- Feng Qian, ECE-S***
- Giacomo Nannicini, ISE**



Professor

- Demetrios Christodoulides, ECE-S**
- Jay Hyung Lee, MFD***

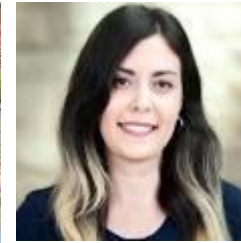
* Joined in Spring 2022
** Joined in Fall (or Summer) 2022
*** Joins in Spring 2023

New and Recent RTPC Faculty Hires



Lecturers

- Emma Singer, AME**
- Saakar Byahut, AME**
- Niloufar Izadinia, ISE***



Senior Lecturer

- Roxana Javid, CEE**
- Marco Popa, CS**
- Susan Schober, ECE-EP**
- Reza Jafarkhani, ITP**
- Maryam Majedi, ITP**



Research Assistant Professors

- Sifat Muin, CEE*
- Bo-Tong Zheng, CEE*
- Luis Garcia, CS (ISI)**
- Filip Ilievski, CS (ISI)**
- Yajie Zhao, CS (ICT)**
- Zaijun Chen, ECE-EP**
- Abigail Horn, ISE (ISI)**



USC at a Glance*



USC Academic Units (22)

- USC Dornsife College, Bovard College, USC Libraries, 19 Professional Schools

USC Faculty (over 6,600 total)

- Approximately 4,600 full-time faculty: ~1,500 T/TT faculty; ~3,100 full-time Research, Teaching, Practice, and Clinical (RTPC) faculty
- Approximately 2,000 part-time faculty
- Over 150 elected fellows of prestigious societies (AAAS, AAAL, APS, ALI...)
- Over 50 affiliated faculty in National Academies (NAS, NAE, IOM)
- 10 National Medal award winners and 6 Nobel Laureates (current & past)

USC Students (49,500 total)

- Approximately 21,000 undergrads; 28,500 grad & professional students
- Degrees awarded June 2020: 5,447 Bachelor's; 13,094 advanced
- More than 450,000 living alumni

Annual Research Expenditures (FY'20-21) and Endowment (June 2021)

- Approximately \$955.6 million in sponsored research; \$8.1 billion in endowment

Viterbi School at a Glance*



Viterbi Academic Units

- Dept's: AME, ASTE, BME, CEE (Astani), CHEMS (Mork), CS, ECE (Hsieh), ISE (Epstein)
- Academic Program Units (non-degree granting): EiS, ITP

Viterbi Faculty

- Over 310 full-time faculty: ~189 T/TT; ~124 Research and Teaching (including Practice)
- > 100 elected fellows of prestigious societies (AAAI, ASME, ACM, BMES, IEEE, ...)
- > 100 NSF Career, Presidential Young Investigator, and/or PECASE Awardees**
- ~ 120 endowed early/mid-career chairs, senior career chairs and professorships
- ~ 20 full-time (and 35 affiliated) faculty who are NAE members; 20 are NAI members

Viterbi Students

- Approximately 9,227 total: ~2,923 undergrad; ~6,304 grad students (Fall'21)
- Over 88,000 alumni
- Typically in Top 10-12 Graduate Engineering Schools (U.S. News & World Report)

Viterbi Annual Research Expenditures (~ 1/4th of USC's)

- Typically over ~\$213 million; more than 45 Research Centers and Institutes

Viterbi Academic Programs*



Academic Programs

- 15 BS programs
- 20 active minors
 - 69 Master's programs
 - 41 Master's programs and 5 grad certificates on-line via DEN@Viterbi
- 13 Doctoral programs

Education and Outside-the-Curriculum Efforts

- KIUEL (Klein Institute for Undergraduate Engineering Life)
- K-12 STEM Center (DEI outreach)
- Maseeh Entrepreneurship Prize Competition (MEPC)
- Min Family Engineering Social Entrepreneurship Challenge
- USC Viterbi Student Innovation Institute (VSI2) and Viterbi Startup Garage
- Student-led efforts (Rocket Propulsion Lab, USC Racing Team, ...)



Useful USC Resources

Policies and Faculty Portals

- Policies, Faculty Handbook, UCAPT Manual, strategic vision, & core doc's
<http://policy.usc.edu>
- Faculty resources, governance, support, guides, calendars, news, events
<http://faculty.usc.edu>
- Useful links and information (e.g., for new faculty (T/TT & RTPC), chairs, mentors)
<https://employees.usc.edu/>

Work Well Center

- <https://workwell.usc.edu/>

Center for Excellence in Research (CER)

- Proposal writing workshops, proposal review, funding opportunities, ...
<https://orif.usc.edu/cer/>

Center for Excellence in Teaching (CET)

- Workshops, seminars, programs, and resources for teaching innovation
<http://cet.usc.edu/>
- See the CET Faculty Teaching Institute: <http://cet.usc.edu/institutes/>



Useful Viterbi Resources

Viterbi Research Portal

- Funding opportunities, research centers/labs, other info for faculty
<http://viterbischool.usc.edu/faculty/faculty-research-resources/>

Viterbi Faculty Portal

- School policies, academic integrity, useful links, and other resources
<https://viterbischool.usc.edu/faculty/>

Viterbi Mentoring Program

- Mentorship of junior faculty
- WiSE Program
- Mentor-mentee and peer-mentoring luncheons sponsored by School
- Annual group mentoring sessions (Vice Dean for Faculty Affairs)
- NSF Career proposal internal review (Vice Dean for Research)
- Understand mentoring roles, responsibilities, benefits and expectations—identify your needs and set attainable goals
<https://viterbischool.usc.edu/faculty/#Mentoring>

Graduate Recruitment



USC and Viterbi Ph.D. Fellowships and Awards

- Provost, Annenberg, Viterbi, Mork, Alfred Mann, Ming Hsieh, Chevron Fellowships
- Viterbi Supplemental, Merit Top-off, WiSE Top-off, GEM, Diversity Top-off Awards

<https://viterbigradadmission.usc.edu/doctorsal/phddegrees/>

On-Campus Student Recruitment Events

- Graduate Engineering Preview Day

<https://viterbigradadmission.usc.edu/events/mspreview/>

- REACH (Recruitment of Engineering Achievers) PhD Preview

<https://viterbigradadmission.usc.edu/reach/>

- Conversion Visitation Days each Spring (coordinated by departments)