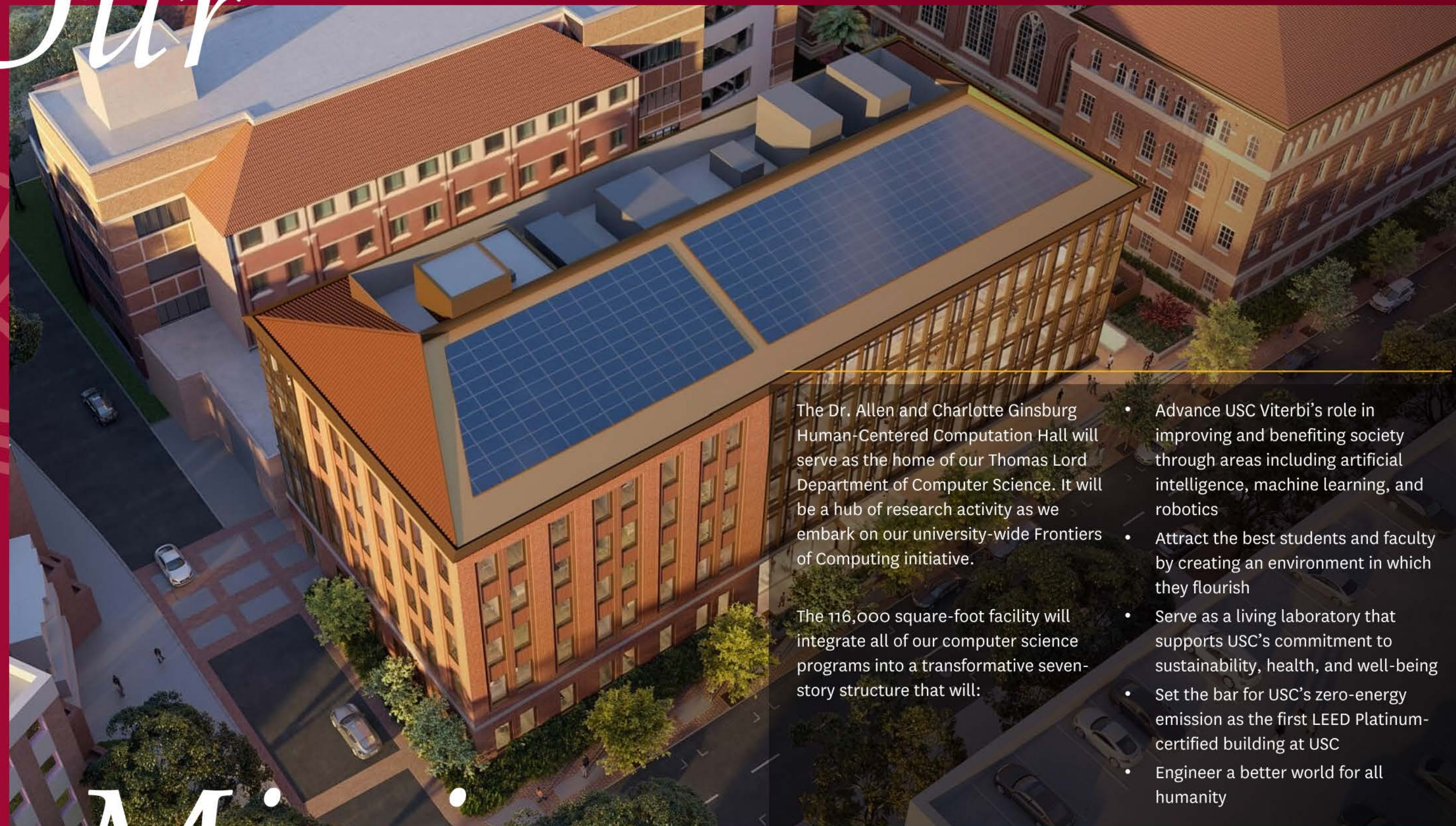




**Dr. Allen and Charlotte Ginsburg
Human-Centered Computation Hall**

*A New Home for
Computer Science at USC*

Our



The Dr. Allen and Charlotte Ginsburg Human-Centered Computation Hall will serve as the home of our Thomas Lord Department of Computer Science. It will be a hub of research activity as we embark on our university-wide Frontiers of Computing initiative.

The 116,000 square-foot facility will integrate all of our computer science programs into a transformative seven-story structure that will:

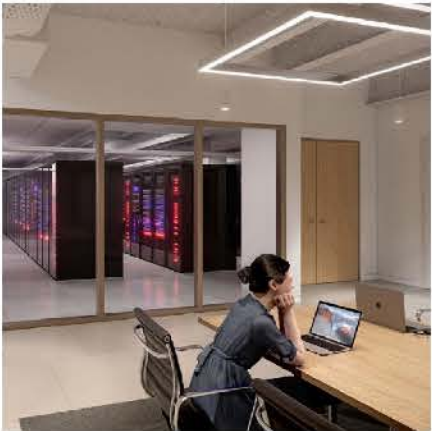
- Advance USC Viterbi's role in improving and benefiting society through areas including artificial intelligence, machine learning, and robotics
- Attract the best students and faculty by creating an environment in which they flourish
- Serve as a living laboratory that supports USC's commitment to sustainability, health, and well-being
- Set the bar for USC's zero-energy emission as the first LEED Platinum-certified building at USC
- Engineer a better world for all humanity

Mission

Ginsburg Hall

Key Facility Features

- Modern computational laboratories that easily accommodate reconfigurations as USC's needs change over time
- Flexible meeting, study, and open spaces that promote collaboration among students, researchers, faculty members, and visitors
- Open plan and glass walls that maximize transparency and integration among labs, offices, and public spaces
- Dedicated space for student organizations
- Department administrative and student services suites
- Faculty offices
- All-purpose auditorium
- Drone "aviary"
- Convergence plaza
- Sunken garden
- Access to transit and bicycle facilities
- Rainwater management
- Light and water efficiency
- Solar panels
- Open atrium letting in fresh air and light, and efficient radiant heating





Join Us

We invite you to be part of a new era of innovation and collaboration at USC Viterbi.

Ginsburg Hall will complete a campus trifecta, along with our Michelson Center for Convergent Bioscience and Ray Irani Hall for Molecular and Computational Biology, that will see students and faculty working on today's most pressing issues, from Alzheimer's disease to cancer research.

Current-use investments to support programs and equipment will be used immediately, while endowment gifts will sustain the facility in perpetuity. Whether large or small, your contributions will play a significant part in helping us to achieve our mission to engineer a world for all humanity.

Fight On!

To inquire about making a gift,
please contact:

USC Viterbi Office of Advancement
(213) 740-2502
viterbi.advancement@usc.edu